

# HOW TO SEW LINED CHRISTMAS STOCKINGS

---

## SEWING TUTORIAL



Create Christmas stockings for the family, for gift bags and more with this easy and adaptable template. Make lined Stockings with our without a folded down cuff and make the fronts as simple or as intricate as you'd like.

## MATERIALS NEEDED:

- PRINTER to print template pieces
- SCISSORS & TAPE to assemble the stocking template
- PINS
- FABRIC SCISSORS
- SEWING MACHINE
- IRON
- FOUR pieces of fabric cut from the template:
  - TWO lining/cuff pieces.
    - 1/3 yard if non-directional, 2/3 yard if directional
  - TWO outside pieces (front & back). The outside can be from the same fabric or you can piece together a more interesting stocking front with a little crazy quilting and use a single print for the back. The beauty of sewing is that you get to make exactly what you want.
    - If you are using a single print for the front and back you need 1/3 yard if non-directional, 2/3 yard if directional.
    - Requirements will vary if you want to make a custom front to then cut to the template.
- 1 1/2" x 9" piece of fabric OR 9" length of ribbon for stocking hanger.

## FINISHED STOCKING SIZES



### Finished size *without* a cuff:

- Approx. 18 1/2" tall x 10 1/2" wide

### Finished size *with* a cuff:

- Approx. 15-16 1/2" tall x 10 1/2" wide depending on how much you fold down.

This pattern works with any kind of fabric and you can make a more custom stocking front or let the fabric print do all the work!

Fabric used in this tutorial is from **Gnome for Christmas** - a flannel fabric collection by Tara Reed for Riley Blake Designs. Ask for it at your favorite in person or online quilting fabric retailer!



## STEP 1: MAKE THE TEMPLATE



figure 1

**PRINT** the 4 template pieces to create your stocking pattern. Check your printer settings & be sure to print "actual size" and not "fit to print" - there is a 1 inch line on the 3rd template page to check your scale. (fig. 1)

**CUT and JOIN** the stocking template pieces together, matching the side indicators.

- X1 with X1 to create the top half.
- X2 with X2 to create the bottom half.
- Match X3 with X3 to join the top & bottom.

## STEP 2: CUT FABRICS

### LINING/CUFF FABRIC:

**WITH WRONG SIDES TOGETHER** pin the stocking template to the lining fabric and cut. (fig. 2)

### OUTSIDE FABRIC:

*If you will make your stocking with the same fabric print on the front and back:*

- **REPEAT** the same process as the lining/cuff fabric with outside fabric.

*If you will make a custom front and use a single fabric print on the back:*

(See pages 7-9 for more details about making a custom front)

### MAKING THE FRONT:

- **CREATE** the front design so it is larger than the template.
- **PLACE** the template on top of the right side of the stocking front, making sure the toe is pointing to the right. (fig. 3)
- **CUT.**

### MAKING THE BACK:

- **PLACE** the back fabric right side up on your table.
- **PIN** the template to the right side of the fabric, with the toe pointing to the left. (fig. 4)



figure 2



figure 3



figure 4

## — STEP 3: SEW LININGS & OUTSIDES TOGETHER —

**PLACE** the stocking front and one lining/cuff fabric *RIGHT SIDES TOGETHER*. (fig. 5)

**SEW** across the top edge with 1/4" seam allowance.

**OPEN & PRESS** seams. (fig. 6)



figure 5



figure 6

*RIGHT SIDES TOGETHER* **PIN** the two units together - matching the center seams and having the linings on top of each other and the outsides on top of each other.

**SEW** around the outside, leaving space open in the lining fabric for turning. Use 1/4" seam allowance on the outside fabrics and 3/8" seam allowance on the lining fabrics so the lining won't be too bulky. (fig. 7)

**TRIM** around toe of the lining to 1/4" from the stitch line to reduce bulk.

**CUT** notches in the curves, especially the toe, so the stocking will have a good shape when turned. (Be careful not to cut your stitching!) (fig. 8)



figure 7



figure8



## — STEP 4: TURN & FINISH YOUR STOCKING —

**TURN** right side out and shape the curves with a fabric turner to make them smooth.

**PRESS** when you are happy with the shape. (fig. 9)

**PRESS** the open ends inside the stocking and **TOPSTITCH** the opening closed. (fig. 10)

**GENTLY TUCK** the lining inside the stocking and press the top edge. (fig. 11)



figure 9



figure 10



figure 11

## — FINISHING OPTIONS —

### OPTION 1: ADD A CUFF

If you like the look of a cuff on your stocking, simply **FOLD** the lining down as far as desired - the lining fabric is now showing as your cuff fabric! (fig. 12)

### OPTION 2: ADD DECORATIVE TRIM

Add pom-pom or other trim to add texture and whimsy. (fig. 13)

### OPTION 3: LEAVE AS-IS & SIMPLY ADD A HANGING LOOP (fig. 14)



figure 12



figure 13



figure 14

## STEP 5: ADD A HANGING LOOP

**CUT** a strip of fabric 1 1/2" x 9".

**PRESS** each short end up 1/4". (fig. 15)

**PRESS** in half length-wise. (fig. 16)

**OPEN** the fabric and **PRESS** each long edge in to the center fold. (fig. 17)

**REFOLD & PRESS** on the first fold - now all raw edges are inside. **TOPSTITCH** on open side (fig. 18)  
(You can also use a piece of ribbon if you prefer!)



figure 15



figure 16



figure 17

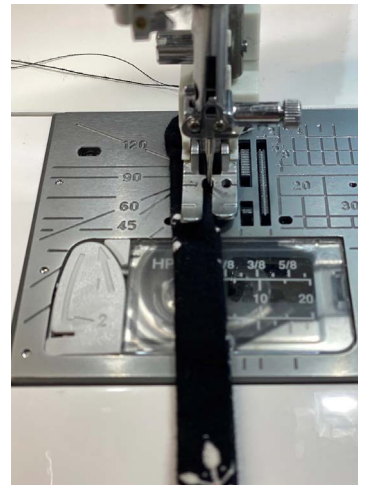


figure 18

**FOLD** the loop in half and **PIN** to the back seam of your stocking, about an inch down.

*If your stockings have cuffs, pin the loop an inch down from the folded edge but **OPEN THE CUFF** to sew in place so the stitching will be hidden under the cuff. (fig. 19)*

**SEW** in place using a bobbin thread that matches your outer fabric in case the stitching shows. (fig. 20)



figure 19

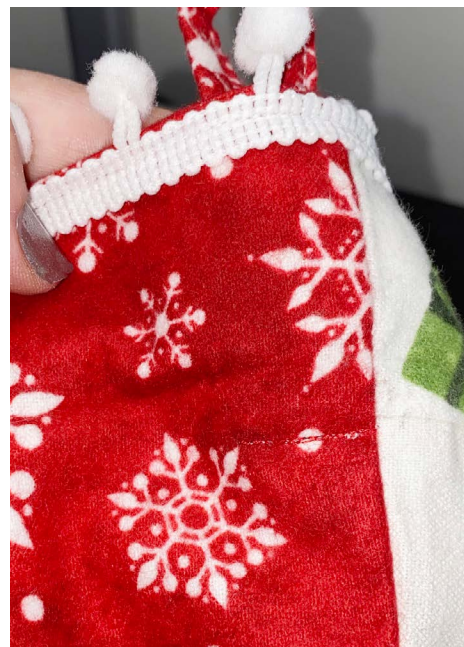


figure 20



# MAKING A CUSTOM STOCKING FRONT

The Gnome for Christmas Panel isn't just for a quick quilt! Cut it apart and you can use the 7 smaller gnome and saying squares to make stockings! (Also available in black and green)



I make custom fronts with the Gnome blocks and fabric scraps - no paper piecing pattern required. It's easy - here's how!

**CUT** apart the quilt panel. (fig 21)



figure 21



Gnome for Christmas Panel by  
Tara Reed for Riley Blake Designs

**PLACE** the Gnome block on top of the stocking template first - making sure the fabric is the same or slightly larger width than the template. **PLACE** coordinating fabric pieces over and under the template. (fig. 22)

- I find it easier to see what I'm doing when I put the fabric under the template at the top.
- Don't worry about the shape at this point, just make sure that when you sew the fabrics together the template will be smaller than the fabric so you can trim to size.
- If you plan to have a fold down cuff, make sure you have at least 3-4" from the top of the template to the top of the text.
- I wanted to make a "toe" fabric section with the white gift toss so I sewed the 4 main stocking pieces together first using a 1/4" seam and pressing to the dark side.

After sewing and pressing the main stocking body, create the "toe" fabric piece.

- **PLACE** the template on top of the right side of the stocking face you have sewn together so far.
- **PLACE** the "toe" fabric where you want it on top of the template, right side up. (fig. 23)
- **FLIP** the "toe" fabric back, with the angled edge in the same place as you positioned it originally.
- **CAREFULLY REMOVE** the template.
- **TRIM** the bottom fabric to the angled edge of the "toe" fabric if needed.
- **PIN.** (fig. 24)



figure22



figure 23



figure 24

**SEW** the pinned edge from fig. 24 with 1/4" seam.

**PRESS** seam open or towards the dark fabric.



**PLACE** your fabric on your workspace, right side up. (fig. 25) You can see from the example that you don't need to worry about how the fabric looks now - as long as you made sure the shape you sew together is bigger than the template you will be fine!

**PIN** the template on top of the fabric and cut to shape. ( 26-27)

This is a quick and easy way to create unique stocking fronts and use up fabric scraps!

You can also create something more ordering by sewing squares or fabric strips and then cutting the template as well. That's the beauty of sewing - you can make exactly what you want!



figure25



figure 26



figure 27

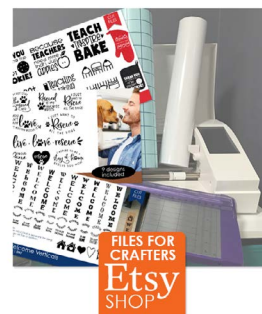


This tutorial features fabric from my **Gnome for Christmas** collection - manufactured and sold by Riley Blake Designs.

Ask for it in your favorite quilt shop!

[Click here to see free projects and ideas with the Gnome for Christmas Flannel Fabrics >](#)

Check out and favorite my Etsy shops so you don't miss a thing!  
Click the images >>



## Let's Connect!

If you make this pattern I'd love to see it!

Instagram: [@artisttarareed](#)

Pinterest: [pinterest.com/artisttarareed](#)

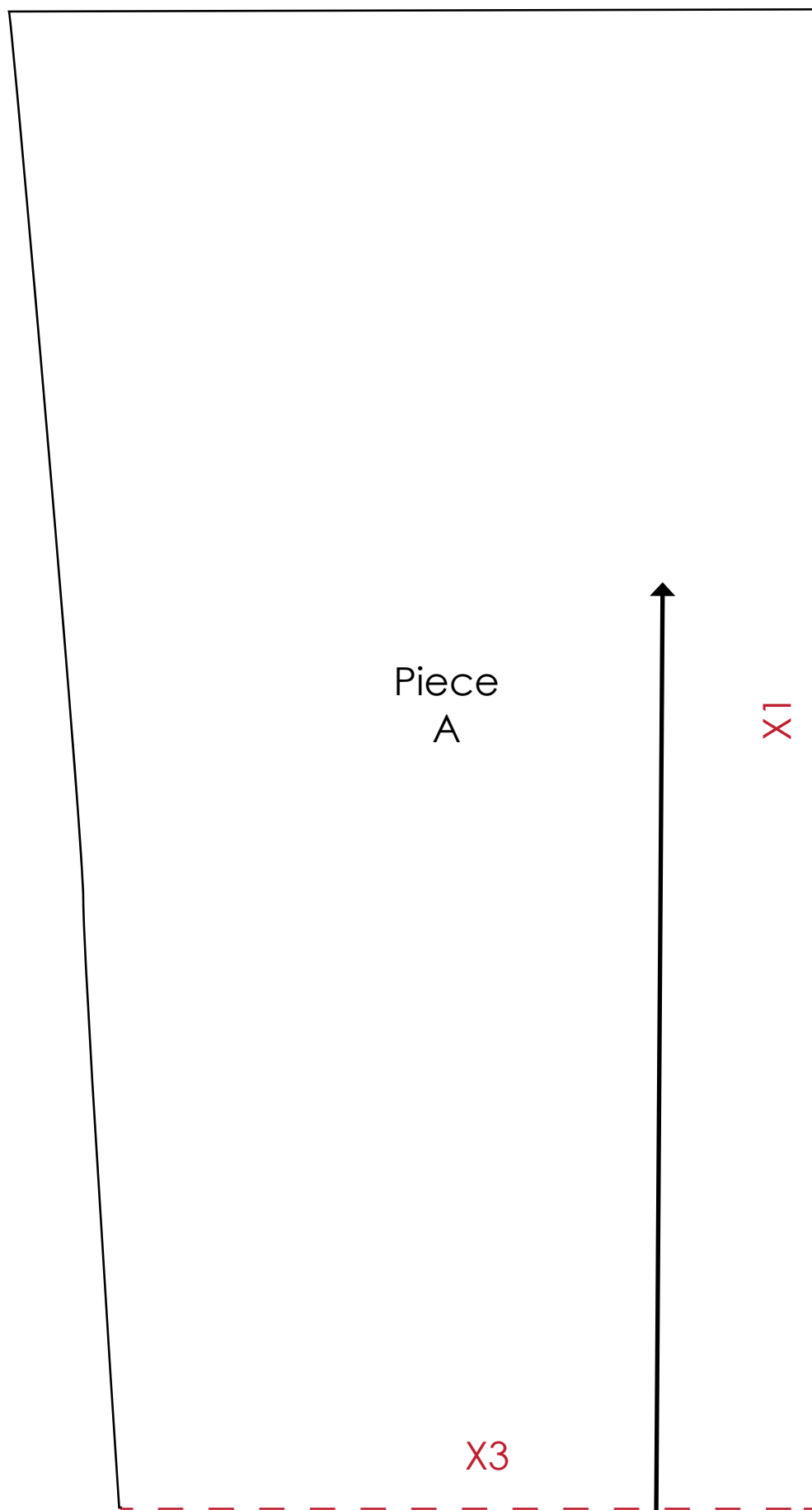
Facebook: [facebook.com/TaraReedDesigns](#)

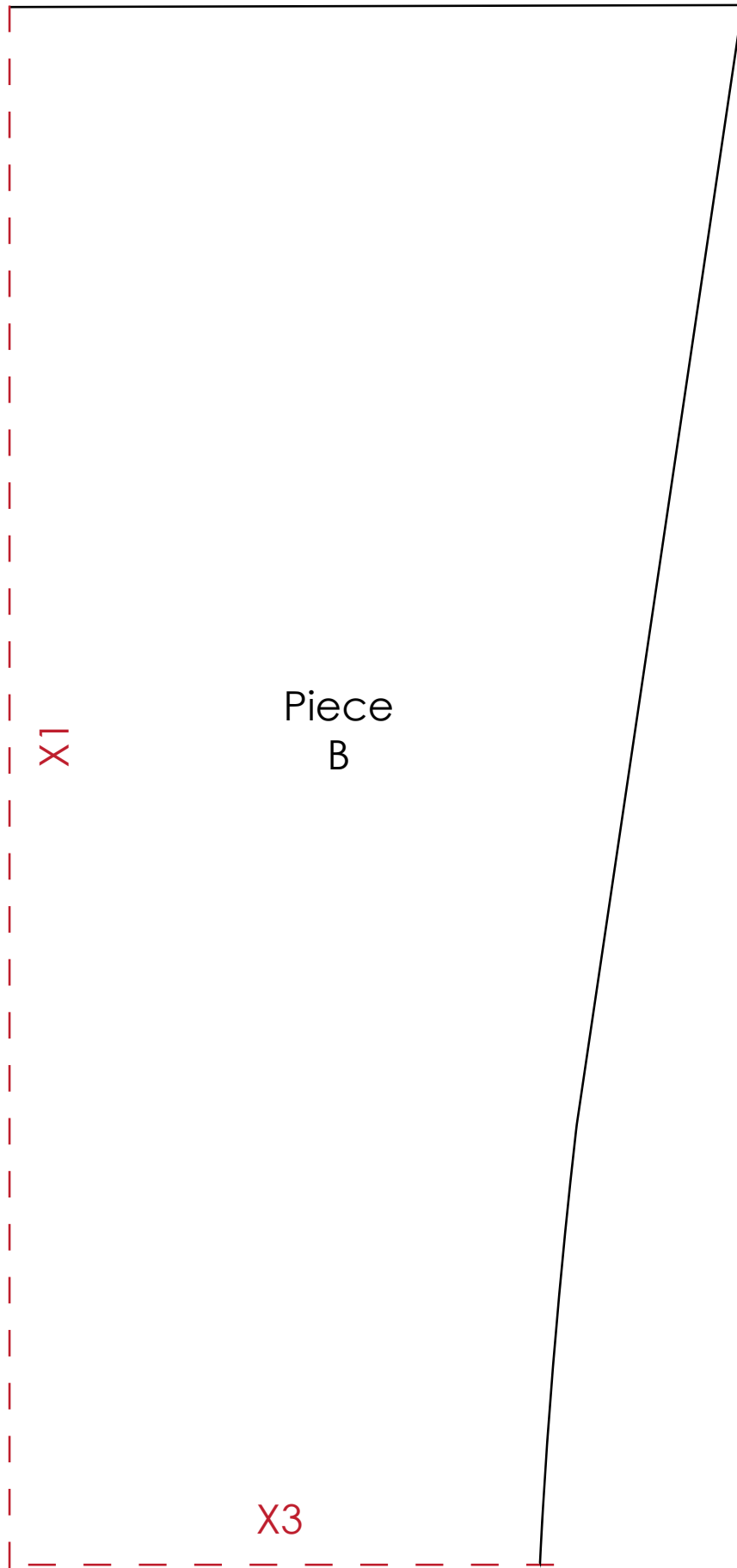
[Subscribe to my YouTube Channel](#)

Blog: [TaraReed.com/blog](#)

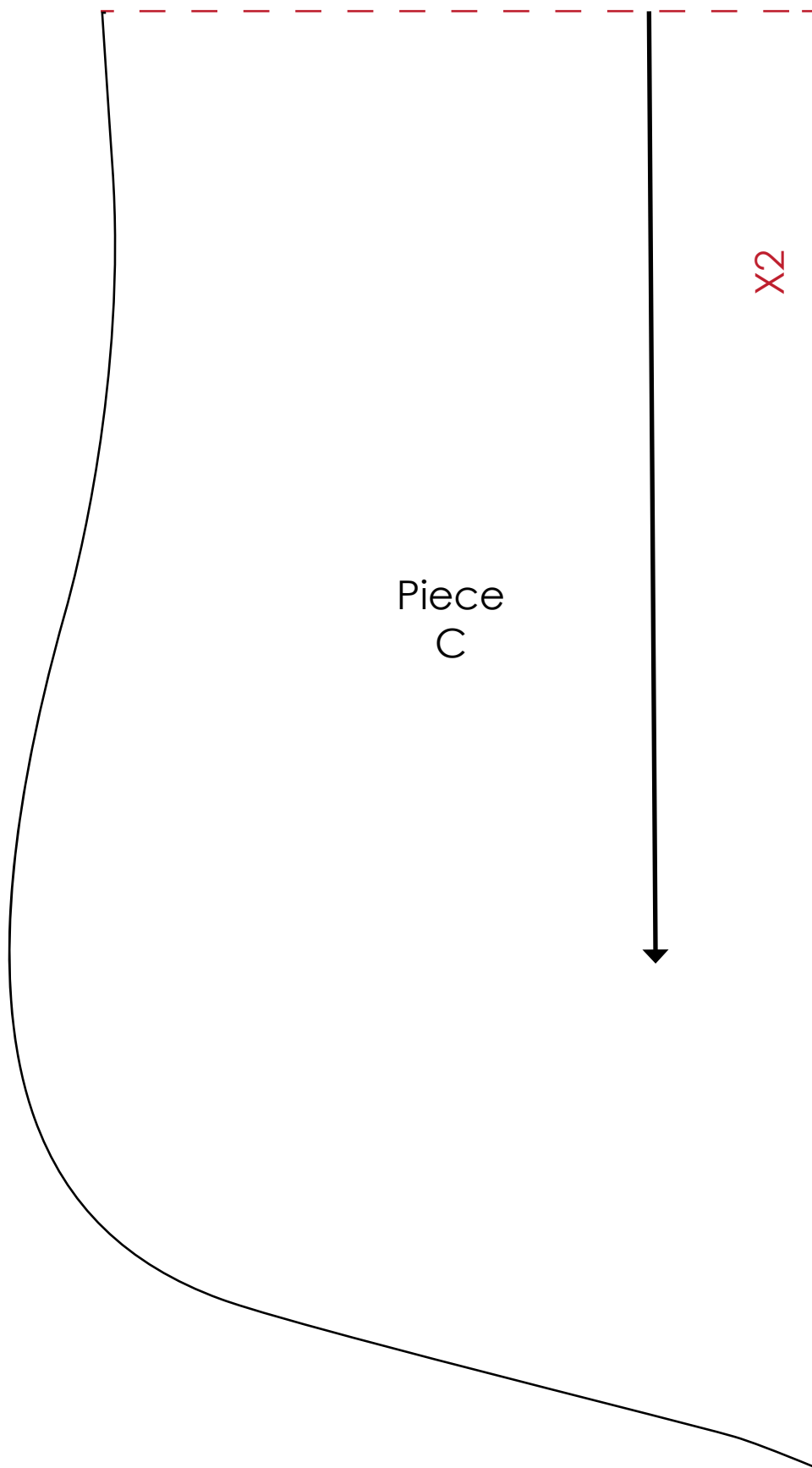
Learn about new fabrics, projects, patterns and more on my website at [TaraReed.com](#)











The red line should be 1" long if it isn't check your printer settings & be sure to print "actual size" and not "fit to print"

